

FED. ROAD DIST. NO.	STATE	PROJ. NO.	FISCAL YEAR	SHEET NO.	TOTAL SHEETS
	OKLA.				

DESCRIPTION	REVISIONS	DATE

RP* 1 91.71 S6°48'20"W Set *4 Rebar
 RP* 2 167.11 S6°48'20"W Set MAG nail N. side PP 1' high
 RP* 3 38.15 N27°15'49"W Set MAG nail S. side PP 1' high

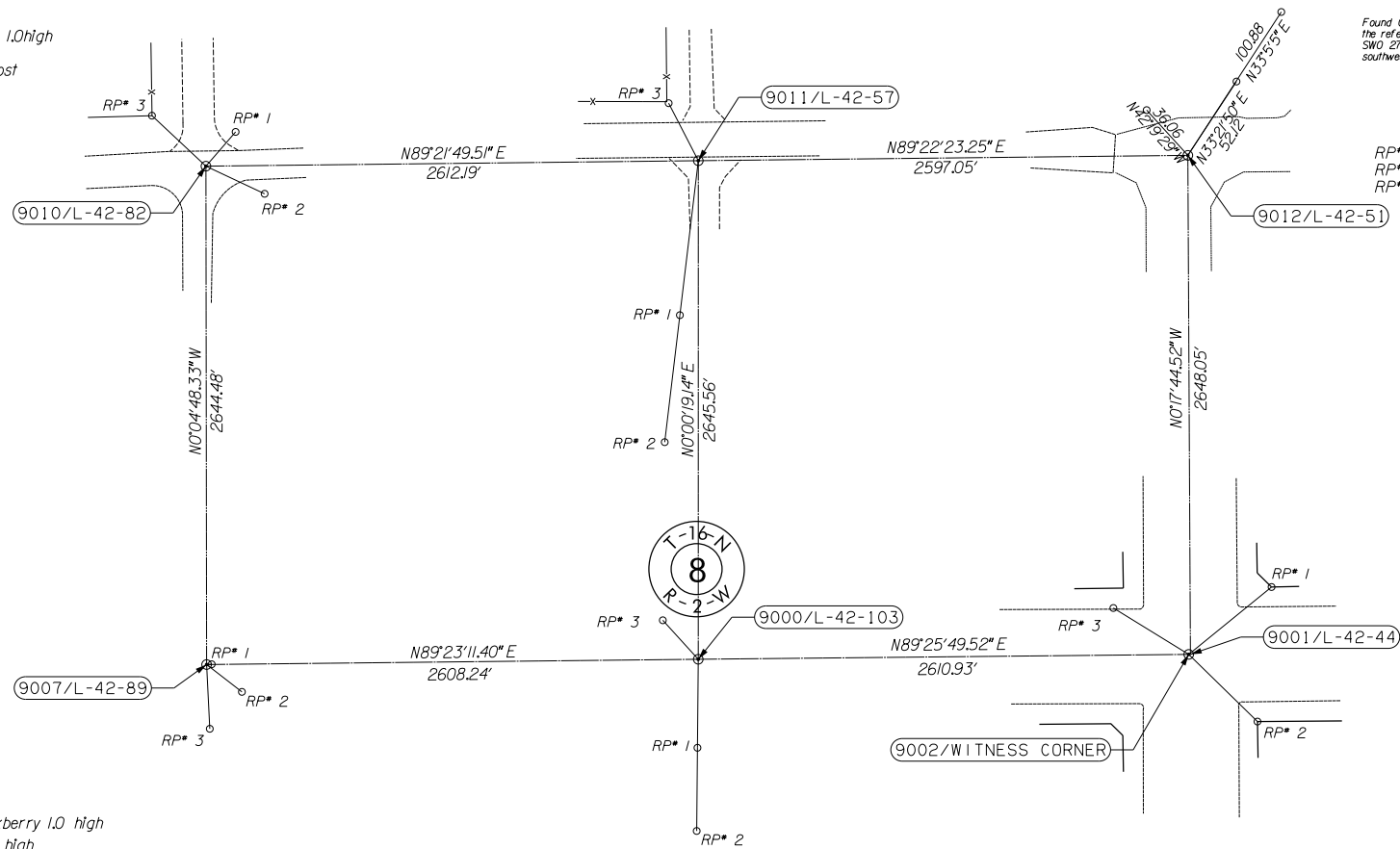
Found ODOT Standard Brass Monument per ODOT S.D. Form No. 1 for Station Number L-42-57, by J.P. Andrews per SWO 2788(1) Survey dated November 13, 1968, as filed with the Department of Libraries for the south quarter corner of said section. Accepted monument assigned ODOT Station Number L-42-57.

Found ODOT 2" steel pipe and one of the references per ODOT S.D. Form No. 1 for Station Number L-42-82 by J.P. Andrews per SWO 2788(1) Survey dated November 13, 1968, as filed with the Department of Libraries for the southwest corner of said section. Also found 3/8" spike and shiner set inside of said 2" steel pipe and references by Justin L. Secrest, PLS 1505, per Certified Corner Record (CCR) as filed with the Department of Libraries on January 17, 2000 for the southwest corner of said section. Accepted monument for corner assigned ODOT Station Number L-42-82.

RP* 1 26.73 N40°53'53"E Fd 40d S side PP 1.0 high
 RP* 2 38.23 S6°47'50"E Top Nut FH
 RP* 3 43.57 N46°52'39"W Near face 2" Cor post

Found Oklahoma Department of Transportation (ODOT) Standard Brass Monument and some of the references per ODOT S.D. Form No. 1 for Station Number L-42-51, by J.P. Andrews per SWO 2788(1) Survey dated November 13, 1968, as filed with the Department of Libraries for the southwest corner of said section. Accepted monument assigned ODOT Station Number L-42-51.

RP* 1 100.88 N33°5'5"E Fd "X" on concrete porch
 RP* 2 52.12 N33°21'50"E Fd *4 Rebar 0.1 deep
 RP* 3 36.06 N42°19'29"W Fd bent 60d SE side PP (at base of nail)



RP* 1 3.01 N86°48'13"E Fd 2" pipe 1.0 high
 RP* 2 26.32 S52°14'2"E Set 60d W side 8" Hackberry 1.0 high
 RP* 3 37.94 S2°49'7"E Set 60d S side PP 2.0 high

Found ODOT Standard Brass Monument set in top of Original Stone per ODOT S.D. Form No. 1 for Station Number L-42-89, by J.P. Andrews per SWO 2788(1) Survey dated November 13, 1968, as filed with the Department of Libraries for the west quarter corner of said section. Accepted monument assigned ODOT Station Number L-42-89.

RP* 1 52.19 S0°31'24.42"W Set *4 Rebar
 RP* 2 101.23 S0°31'24.42"W Set *4 Rebar
 RP* 3 31.06 N42°15'57.86"W Set 60d in S. side 30" Elm 2' high

RP* 1 62.94 N50°51'28"E SWS Bldg cor
 RP* 2 56.65 S45°39'39"E NW Bldg Cor
 RP* 3 52.17 N58°22'35"W Fd "X" on curb

Nothing found at corner per ODOT S.D. Form No. 1 for Station Number L-42-103, by J.P. Andrews per SWO 2788(1) Survey dated November 13, 1968, as filed with the Department of Libraries for the center corner of said section. Set 1/2" rebar with cap for corner per said survey for corner assigned ODOT Station Number L-42-103.

Nothing found at corner per ODOT S.D. Form No. 1 for Station Number L-42-44, by J.P. Andrews per SWO 2788(1) Survey dated November 12, 1968, as filed with the Department of Libraries for the west quarter corner of said section. Set MAG Nail for Witness Corner 1.00 foot west and on the 1/4 section line per said survey for corner assigned ODOT Station Number L-42-44.



SCALE: 1"=500'

NOTE: REFERENCE'S SHOWN ARE NOT TO SCALE.

PLS	GSR	OKLAHOMA DEPARTMENT OF TRANSPORTATION SURVEY DIVISION	
DRAWN	JMW	SURVEY DATA SHEET	
CHECKED			
APPROVED			
CREW	ElReno		
		SWO 4432 (1)	PROJECT NO. 21860(04) SHEET NO. 5017